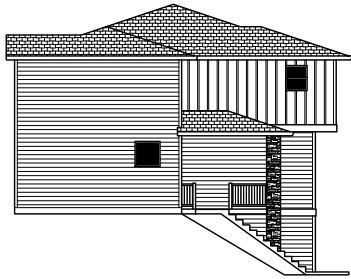
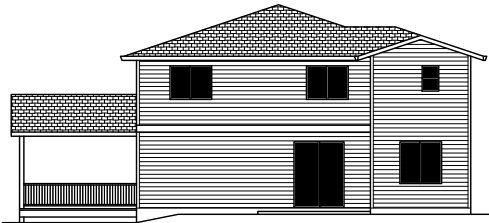




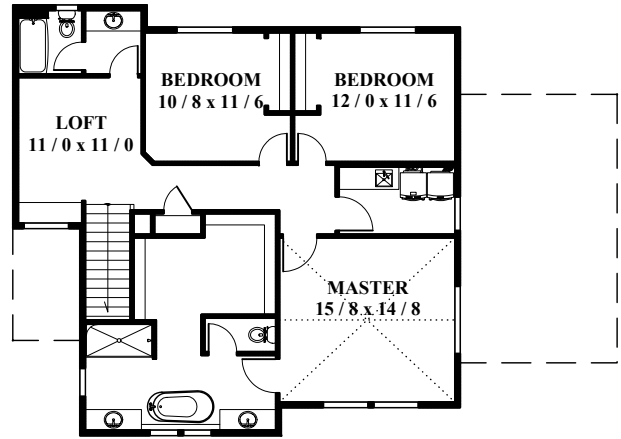
FRONT ELEVATION



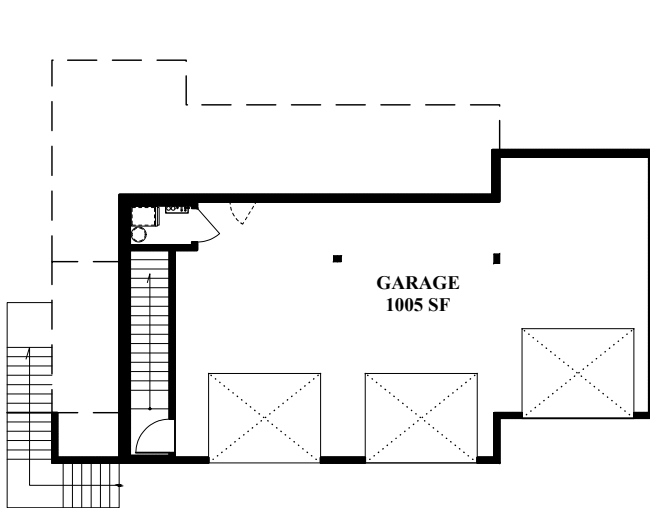
LEFT SIDE ELEVATION



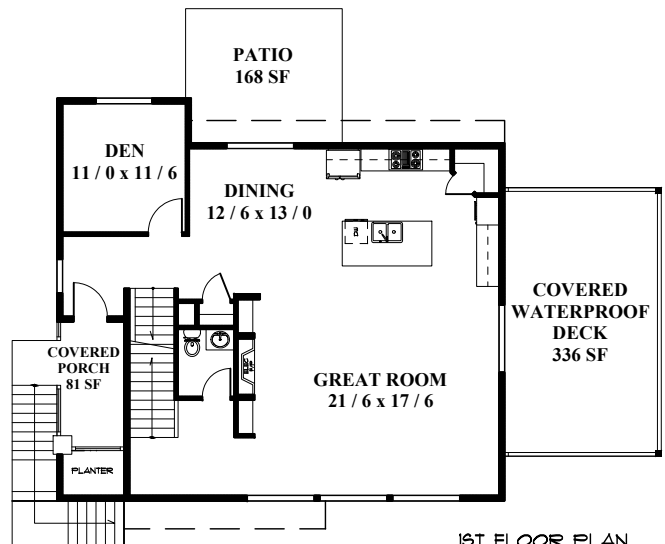
REAR ELEVATION



2ND FLOOR PLAN



BASEMENT PLAN



1ST FLOOR PLAN

1st Floor	1233 SF
2nd Floor	1292 SF
Basement	85 SF
Total Area	2609 SF

WIDTH
40'-0"
DEPTH
36'-0"

"Bayview"



SONGBIRD
— HOMES —